

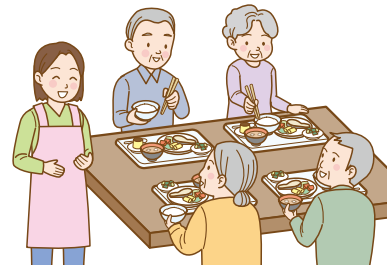
\* This is a community-oriented service, so it is available only to the residents of the municipality where the service provider or facility concerned is based.

### ■ Short-stay daily-life care service

(social welfare-oriented short-stay)

The individual in need of care stays at a special nursing home for the elderly or other facility for a short period of time to under daily-life service and rehabilitation training.

This service can be used continuously for up to 30 days.

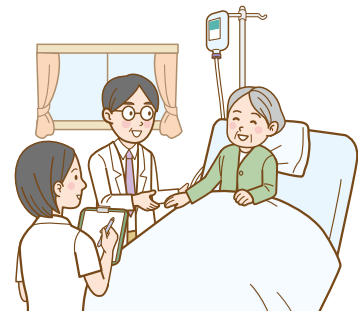


### ■ Short-stay medical care service

(healthcare care-oriented short-stay)

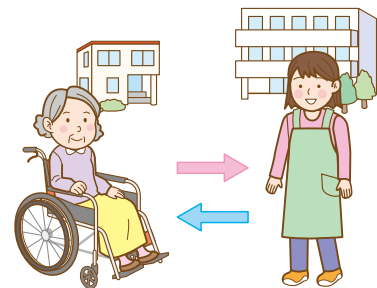
The individual in need of care stays at a medical institution, etc. to take healthcare services or undergo rehabilitation under the supervision of doctors and nurses.

Users can stay 30 successive days or less.



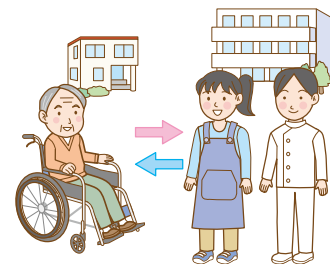
### ■ Small-scale/multifunction in-home care \*

The individual in need of care goes to a facility in the community. The facility offers services such as meals, bathing, and functional improvement. This service allows for users to stay over at care facilities, or for staff to pay visits to the homes of users, which enables users to stay at home even if the care level progresses.



### ■ Small-scale/multifunction in-home care and home-visit nursing \*

This service, comprised of a combination of small-scale/multifunction in-home care and home-visit nursing encompasses a multitude of services including outpatient care, short stay, home visit care, and visiting long-term care. These services also support individuals who need a high level of medical care but wish to stay in their homes.



Only those certified as a care level of 1, 2, 3, 4, or 5 can use this service.