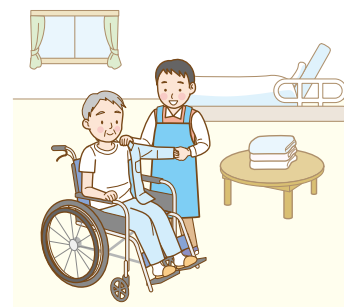


* This is a community-based service, so it is available only to the residents of the municipality where the service provider or facility concerned is based.

■ Daily-life care service in specified facilities

The individual in need of long-term care receives care while living in a paid home for the elderly, care house, etc. Some specified facilities outsource a certain amount of services to other companies. You can also use other care services in some specified facilities.



■ Community-based daily-life care services in live-in facilities *

The individual in need of long-term care receives care living at a small-scale (maximum capacity of 30) paid community-based home for the elderly or similar. Only those certified as needing care or their spouses are eligible for specialized nursing care facilities, while only those requiring care can access long-term care service.

Those certified as a support cannot use this service.

Approximate user payment per month

(Unit: yen/30 days)

Depends on type of facility and other factors		User payment level	Long-term care service expense (10% user payment)	Food expenses	Residential expenses	Total
Social welfare facility for the elderly requiring care (special nursing home for the elderly)	Unit-type private ward	Level 1	15,000	9,000	24,600	48,600
		Level 2	15,000	11,700	24,600	51,300
		Level 3	24,600	19,500	39,300	83,400
		Level 4	25,900 to 30,400	-	-	-
	Multiple-bed ward (shared by two or more users)	Level 1	15,000	9,000	0	24,000
		Level 2	15,000	11,700	11,100	37,800
		Level 3	24,600	19,500	11,100	55,200
		Level 4	23,300 to 27,700	-	-	-
Health service facility for the elderly care (regular)	Multiple-bed ward (shared by two or more users)	Level 1	15,000	9,000	0	24,000
		Level 2	15,000	11,700	11,100	37,800
		Level 3	24,600	19,500	11,100	55,200
		Level 4	29,400 to 32,800	-	-	-

Note 1: The User Payment Level shown in the charts differs from Income Level for insurance premium purposes.

Note 2: Food and living expenses for Levels 1-3 is the amount after applying the supplementary benefit for amounts exceeding cost limits prescribed by the government, and high-cost long-term care service expense shown on page 11, and is the upper limit charged to the user. (Starting in August, 2021, the limit for food expenses at the third level has been partially updated).

Note 3: Long-term care service expense differs depending on the region (The chart above shows figures for special wards).

Note 4: Food and residential expenses for individuals falling into the Level 4 category cost burden are determined by contract between the user and the facility.

Note 5: Besides the figures noted in the chart above, depending on the individual's physical and emotional state, additional charges apply for dietetic food and for specialized care for dementia cases. In addition, daily use items such as toothbrushes and cosmetics; influenza vaccinations; and other amenities are paid for by the individual, as determined by contract between the user and the facility.