

Social Welfare and Public Health in Tokyo

2021

1. To Realize Reliable Welfare, Public Health and Medical Care Services for Present and Future Generations	
Welfare and Public Health Budget of the Tokyo Metropolitan Government	1
2. Welfare, Health and Medical Care Policies of Tokyo	
(1) Welfare for Children and Families	2
<ul style="list-style-type: none"> • Current Status of Children and Families • Tokyo Metropolitan Comprehensive Plan to Support Children and Child-rearing • Daycare Services • Support for Child-rearing, Creating a Friendly Environment for Child-rearing, and Promotion of Healthy Development • Consultation regarding Child/Family Affairs • Enhancement of Children's Consultation System • Expansion of Social Care • Promotion of Independence Support of Adolescent Youth • Improvement of Maternal and Child Health • Support for Single-parent Families • Welfare Programs for Women 	
(2) Welfare for Elderly	16
<ul style="list-style-type: none"> • Current Status of Elderly • Tokyo Metropolitan Health and Welfare Plan for Elderly • Framework of the Long-term Care Insurance System • Services of the Long-term Care Insurance System • To Improve Long-term Care Services • Support to Secure Human Resources for Long-term Care and Medical Care • Support for Daily Life in the Community to Prevent Physical Deterioration • Strengthening Cooperation between Medical Care and Longterm Care • Support for Elderly with Dementia • Improvement of Infrastructure of Community Support Services • Promotion of Social Participation by Seniors 	
(3) Welfare for Adults and Children with Disabilities	28
<ul style="list-style-type: none"> • Current Status of Adults/Children with Disabilities • Three-year Plan for Assistance on Making the Shift to Life in the Community/Day to Day Life (from FY2021 to FY2023) • Comprehensive Support for Persons with Disabilities Act • Child Welfare Act (Assistance for Children with Disabilities) • Realization of an Inclusive Society • Support for Social Participation by Persons with Disabilities • Promotion of Sports Activities for Persons with Impairments • Promotion of Shift to Community and Service Infrastructure Improvement • Enhancement of Community-based Medical Assistance Systems • Enhancement of Employment Promotion Measures toward Independent Living • Developing and Securing Personnel Engaged in Services • Medical Care Support and Allowances for Persons with Disabilities • Consultation regarding Disability Matters and Support for Medical Care and Development, and Others • Marks for Persons with Disabilities 	
(4) Promotion of Public Welfare Programs	43
<ul style="list-style-type: none"> • Public Assistance • Improvement of Living Environment at Lodging Facilities, Free of Charge or at Low Cost • Program to Support Measures for Preventing the Spread of Infection in Care Facilities • System to Support Persons Living in Poverty to Gain Self-Reliance • Loan Programs for Social Welfare Fund • New-life Support Program for Persons in Poverty • Social Participation Support Program for Persons who have Withdrawn from Society • Project to Ensure that the Elderly Remain in the Community • Measures for Low-income Persons and Displaced Workers • Programs for Homeless People • Measures for the Sanya Area • Support for War Victims • Support for Disaster Victims • Creating a Welfare City • Promotion of a Barrier-free Designs, Looking Ahead to Tokyo 2020 Games • Securing, Retention and Development of Human Resources 	
(5) Securing Health and Medical Care Service Systems	50
<ul style="list-style-type: none"> • Current Status of Medical Facilities • Tokyo Metropolitan Health and Medical Care Plan • Provision of Medical Information • Medical Care for International Patients • Improvement of Health and Medical Care Service Systems in the Community • Enhancement of In-home Medical Assistance Systems • Measures against Cancer • Enhancement of Emergency Medical Care • Enhancement of Perinatal Medical Care • Enhancement of Disaster Medical Care • Improvement of Measures regarding Medical Care in Remote Areas • Securing and Improvement of Medical Human Resources • Ensuring Medical Safety 	
(6) Promotion of Health Policies	59
<ul style="list-style-type: none"> • Public Health Centers/Municipal Health Centers • Promotion of Comprehensive Measures against Suicides • Health Promotion • Support for Patients with Intractable Disease and Atomic-bomb Survivors • Improvement of Measures for Issues of Blood Supply and Organ Transplantation 	
(7) Health Crisis Management	66
<ul style="list-style-type: none"> • Preparing for a New Health Crisis • Infectious Diseases Control against Novel Coronavirus (COVID-19) • Infectious Diseases Control • Food Safety • Pharmaceutical Safety • Response to Adverse Effects on Health Caused by Living Environment • Securing Environmental Sanitation • Animal Welfare and Management 	
(8) The Role of a Wide-ranging Government	78
<ul style="list-style-type: none"> • Support for Proactive Development of Policies by Local Authorities • Securing Trustworthy Services and Improvements of Qualities 	
(9) Improvement and Strengthening of the System that is Resistant to Disasters	80
<ul style="list-style-type: none"> • Promotion of Seismic Reinforcement of Social Welfare Facilities and Medical Facilities and Ensuring Their Functionality • Enhancement of Disaster Medical Care • Support for Disaster Victims 	
3.For Reference	81

Note: (New) indicates new projects.



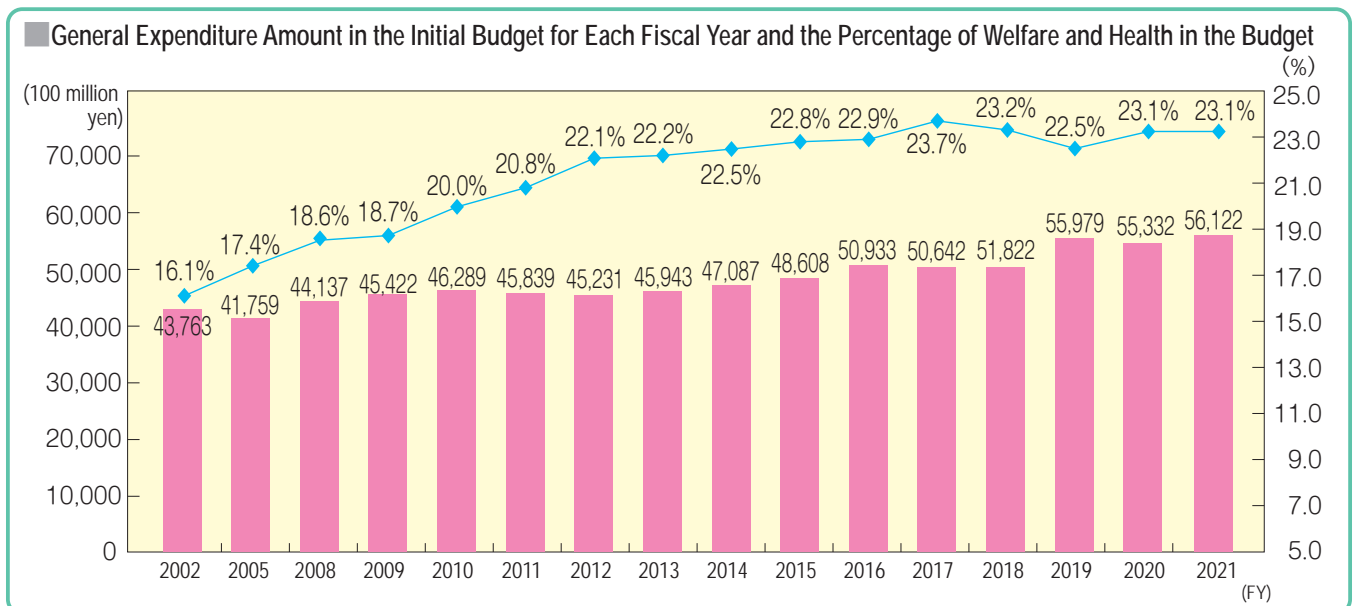
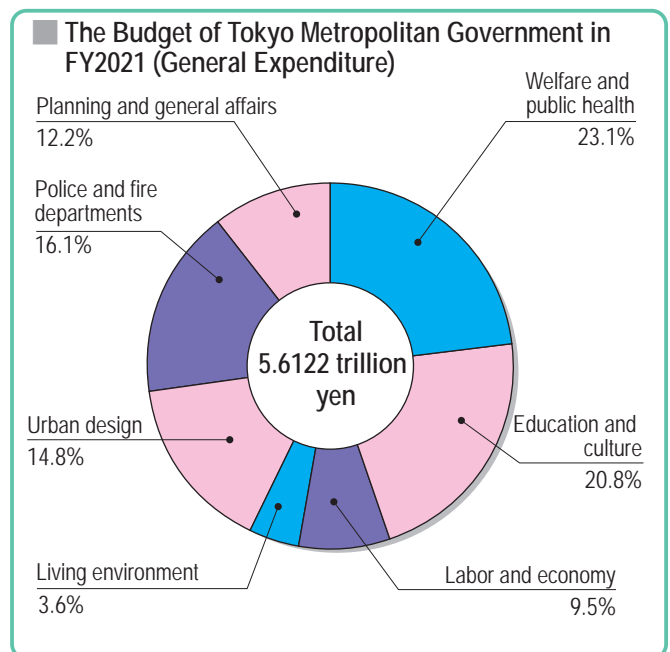
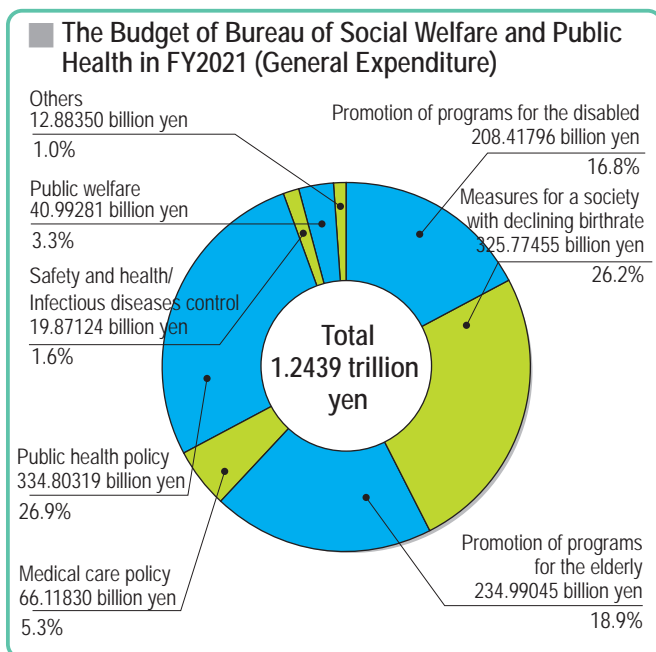
1 To Realize Reliable Welfare, Public Health and Medical Care Services for Present and Future Generations

Welfare and Public Health Budget of the Tokyo Metropolitan Government

The Tokyo Metropolitan Government FY2021 budget has been positioned and organized as “a budget which, even in the current severe fiscal environment, gives the highest priority to protecting the lives of metropolitan Tokyo residents while supporting Tokyo’s economy and steadily realizing the mission imposed on the Tokyo Metropolitan Government looking ahead to the future”. With a view to protecting the lives and health of metropolitan area residents and realizing user-oriented welfare that supports self-reliance in the community, the Bureau of Social Welfare and Public Health has compiled its budget and policies to strengthen various initiatives in line with the unique needs of a big city, and based on the concept of pushing ahead with policy developments that will ensure that all residents are able to remain active and fulfilled. As a result, the budget of the Bureau of Social Welfare and Public Health was allocated 1 trillion 243.852 billion yen, which accounts for 16.8% of the total TMG budget (total general account of 7 trillion 425 billion yen). Furthermore, the budget allocated to “welfare and public health affairs (the social welfare and health budget and payment to hospitals, etc.)” accounts for 23.1% of the TMG general expenditures.

* Situation at the announcement date of January 29, 2021. In order to swiftly take measures to combat the novel coronavirus disease(COVID-19), 121.02979 billion yen was included in the budget of the Bureau of Social Welfare and Public Health as a supplementary budget(announced on February 18, 2021).

* “General expenditure” indicates the “cost of policy”, which is the total general amount after deducting debt expenditure, the special balance carried forward in the special ward fiscal adjustment account and the expenditure for granting a fixed percentage of the tax amount to municipal governments, such as consumption tax.



2 Welfare, Health and Medical Care Policies of Tokyo

(1) Welfare for Children and Families

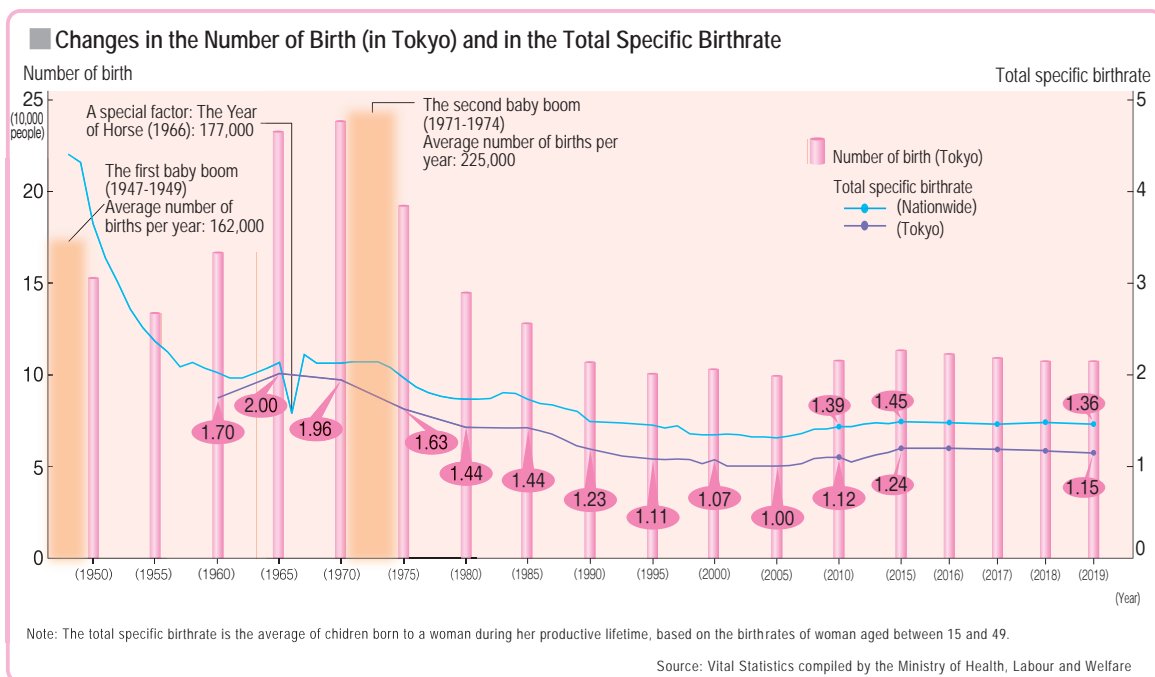
Weaker relations within the community have resulted in weakened child-rearing abilities in families and communities. It is also becoming difficult to fulfill one's wish to have children due to factors such as the situation of desiring to have one's children taken care of in daycare facilities but are unable to do so, and an environment in which it is not always easy to balance work and child-rearing. Based on the "Tokyo Metropolitan Comprehensive Plan to Support Children and Child-rearing (Second Term)" formed in March 2020, the TMG is promoting various measures to support children and child-rearing.

Current Status of Children and Families

Rapidly Declining Birthrate

In Tokyo, the number of children under the age of 18 as of January 1, 2020 reached about 1,860,000, which accounts for about 14.1% of the total population of Tokyo. The number of births in 2019 was 101,818, which is low – less than half the

number of babies born between 1971 and 1974 during the second baby boom. The total fertility rate in 2019 was 1.15, which represented the lower percentage than that of the last year, still the lowest level in the country.



Increase in the Number of Working Women and Family Forms

The number of working women is increasing and the nuclear family structure is the most common family unit.

Tokyo Metropolitan Comprehensive Plan to Support Children and Child-rearing

The "Tokyo Metropolitan Comprehensive Plan to Support Children and Child-rearing" is a comprehensive plan related to children and child-rearing in Tokyo, formulated by combining

the "Plan to Support Projects Supporting Children and Child-rearing" based on the Act on Children and Child-rearing Support, the "Local Action Plan" based on the Act for Measures to Support the Development of the Next Generation, and the "Plan to Promote Measures Against Prefectural Child Poverty" based on the Act to Promote Measures Against Child Poverty.

The second term plan period consists of the five-year period from FY2020 to FY2024.

Plan Principals

1. Develop and enrich an environment where all children develop their individuality and creativity, and become independent as a member of society.
2. Realize a society where people can have and raise children with a sense of security and feel the joy of parenting.
3. The society as a whole supports children and families raising children.

Objectives and Initiatives

Objective 1: Develop a system for seamless support from pregnancy, childbirth to child-rearing in the community

◆Support municipalities responsible for providing child and child-rearing support in the community and develop a system to provide seamless support from pregnancy, childbirth to child-rearing, so that children and families can use services tailored to their needs.

Objective 2: Improve education and childcare during the infant stage

◆Provide support required to secure various high quality education and childcare based on the importance and characteristics of the infant stage, and to respond to the expectations of families raising children in the community.

Objective 3: Improve support according to the child's growth stage

◆Build a system where children of the next generation develop an ability to learn, think and act by themselves, while preparing to become independent with an awareness of being a member of society. Further, provide employment promotion and support for self-reliance to the young people who will bear the next generation, and promote the creation of locations where elementary school-aged children can go after the school day finishes.

Objective 4: Enhance support to children and families requiring more support

◆Comprehensively promote support for children and families requiring more support by accurately grasping the physical and mental conditions of children and guardians, while considering the best interests of the child so that every child growing up in various environments can maintain their dreams and hopes.

Objective 5: Build a foundation to ensure sound growth of children of the next generation

◆To aim for a society that achieves the balance between the family life and work (work-life-balance), develop working environments where people can easily take childcare leave, etc. regardless of gender, and improve the employment situation to balance work and parenting. Initiatives also include securing living environments where people can live with security, and prevention of traffic accidents, etc. In addition, stimulate opportunities for assisting children and child-rearing throughout society.

Daycare Services

In response to the needs for daycare services which remain high, together with various needs including daycare for sick children, the TMG will support municipalities and private-sector service providers to enhance the daycare services, and improve and expand both the quality and quantity of childcare services.

[Expansion of Daycare Services] (Promotion of establishment)

Project to Promote the Establishment of Facilities

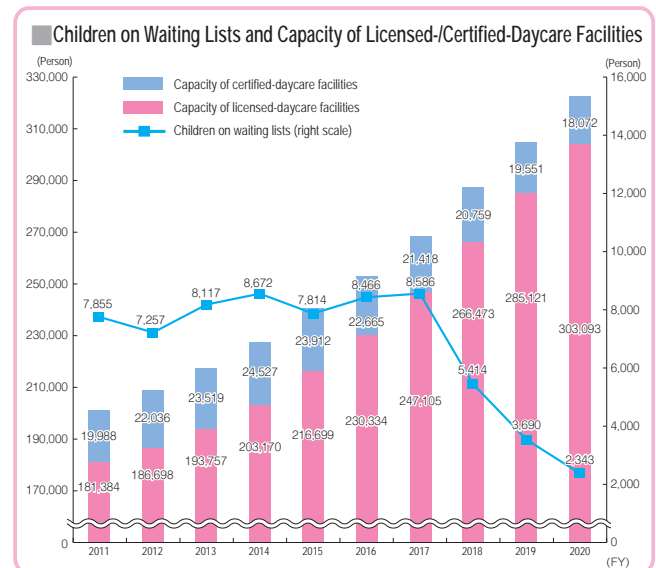
In addition to the subsidy from the Government to support the establishment of facilities, the TMG implements various unique support initiatives such as a subsidy to further reduce the burden of municipalities and operators of daycare facilities, and a subsidy for rent when establishing new facilities using rented property, etc.

Project to Secure the Land for Daycare Facilities

In order to promote the development of the environment by providing support to secure the land for daycare facilities, the TMG implements supportive initiatives such as lowering the amount of loan of the land owned by the TMG, providing subsidy for a part of the land lease for state-owned land or private land, and providing subsidy for lump-sum payments when a fixed-term land leasehold is utilized.

Tokyo Daycare Information Service "Horenso"

This is a service to link potential providers of daycare services using municipal property with available properties and propose activities by said providers.



(Various Daycare Services)

The TMG supports efforts by municipalities to enhance the daycare services by providing various combined services such as licensed daycare facilities, TMG certified-daycare facilities, and authorized child-care facilities according to local circumstances.

Licensed-daycare Facility

The child welfare facilities all licensed according to the Child Welfare Law for children which provide services to preschool age children requiring daycare. As of April 1, 2020, 3,325 daycare facilities (with a total capacity of 303,093 children) are located in Tokyo.

TMG Certified-daycare Facility

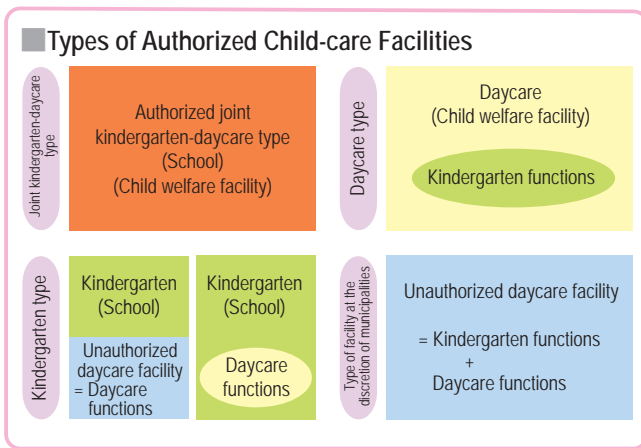
Daycare facilities are established and operated based on TMG's own unique criteria focusing on the specific features of the metropolitan city in order to meet the needs of Tokyo residents. As of April 1, 2020, 537 daycare facilities (475 of type A and 62 of type B) are located in Tokyo.

Nighttime Childcare Service Program

By supporting TMG-certified daycare facilities which are implementing activities to provide nighttime childcare and 24-hour daycare services, this program provides daycare services which can be utilized by metropolitan area residents with peace of mind at nighttime (10:00 p.m. to 7:00 a.m. the following day) and on holidays.

Authorized Child-care Facility

In the system for authorized child-care facilities, prefectural governors provide a license or authorization to facilities that: 1) Accept any preschool age child regardless of working condition of parents and provide both nursery services and preschool education, and 2) are able to provide childcare-related support in communities. As of April 1, 2020, 155 child-care facilities are located in Tokyo.



○Types of Facilities

• Joint Kindergarten-daycare Type

In line with the enforcement of the new support system for children and child-rearing, the joint kindergarten-daycare type facility became a unified licensed facility having the status of a school and child welfare facility.

Authorized child-care facilities other than the joint kindergarten-daycare type include the following three types depending on the facility. In the system, facilities such as existing licensed kindergartens or licensed-daycare facilities, etc. supplement each other's functions to receive authorization.

• Kindergarten Type

A licensed kindergarten that functions as an authorized child-care facility by having the function of a daycare facility, securing daycare time for children requiring such services, etc.

• Daycare Type

A licensed daycare facility that functions as an authorized child-care facility by having the function of a kindergarten, accepting children other than those who require daycare services, etc.

• Type of Facility at the Discretion of Municipalities

Local education or daycare facilities that are not licensed as either licensed kindergarten or daycare facility, but have the necessary functions of an authorized child-care facility.

Home-like Childminding Program

Home-like childminders (persons authorized by the municipality as competent to take care of nursing infants and children

requiring daycare) provide daycare services at places such as their home, with a capacity of up to five children. The program is either supported independently by TMG or authorized by the municipality.

Small-scale Daycare Program

Authorized program by municipalities offering daycare services, in which small-scale daycare facilities with capacity between 6 and 19 children provide daycare services to nursing infants and children requiring daycare.

Home Visiting Type Daycare Program

Authorized program by municipalities offering daycare services, in which home-like childcarers provide daycare services to nursing infants and children requiring daycare at the child's home.

Daycare Facilities at Businesses

Authorized program by municipalities offering daycare services, in which businesses provide daycare services by themselves or through consignment for their employees' children or children in the community requiring daycare services.

Temporary Care Program

This is a program in which children are temporarily looked after in daycare or other facilities in cases where daycare is required on an emergency or temporary basis due to the illness of guardians or because of childcare fatigue.

Daycare Program for Regular Use

This is a unique TMG daycare service that provides certain services on a regular basis for children of part-time workers and those who work shorter hours after taking childcare leave, by using available space in programs such as the temporary care program.

Program to Accept One-year-old Children as an Emergency Measure

The program accepts one-year-old children using vacant and surplus space at licensed-daycare facilities as an emergency measure.

Program to Accept One-year-old Children at TMG Certified-daycare Facilities

The program promotes to accept one-year-old children using vacant and surplus space at TMG certified-daycare facilities.

Tocho (Tokyo Metropolitan Government) Daycare Facilities

The TMG promotes the establishment of daycare facilities operated by private-sector companies and other organizations, which are open to local residents, in its places of business, and aims to make this a symbolic means of solving some of the issues of children on daycare waiting lists. On October 1, 2016, the Tocho Daycare Facility was opened on the first floor of the Tokyo Metropolitan Assembly Building.

[Responding to Various Daycare Needs] Extended Daycare

This is an initiative to offer daycare at daycare facilities, etc. at times other than the regular days and hours of use to children qualified to receive daycare

Daycare Program for Sick Children

The program offers daycare and nursing care for sick and convalescent children, in dedicated areas constructed at childcare facilities and hospitals.

Support for Children Requiring Medical Care

Support is provided to municipalities for developing systems such as stationing nurses in daycare and other facilities in response to the daycare needs of children requiring medical care.

Program for Pickup Stations to Daycare

In order to allow children to go to facilities, etc. at a distance from their home, the program sets up pickup stations at convenient locations to transport children by bus, etc.

Program to Promote Support for Children Requiring Aid in Daycare Facilities, etc. (New)

In order to give support for children requiring aid and enhance links with related organizations, the TMG supports municipalities that are developing systems, such as stationing regional cooperation promoting workers in key daycare facilities and providing support by visiting daycare facilities in their administrative areas.

Support for Users of Unlicensed Daycare Facilities

The TMG offers support for municipalities that subsidize the costs of using unlicensed daycare facilities, in order to reduce the burden placed on parents using such facilities, and are promoting the coordination of daycare services, and improvements in their quality, according to the situation in each area. Further, in order to provide guardians wishing to have two or more children with the peace of mind to bear and raise children, support will be provided to municipalities with the intention of reducing the fee-paying burden of multi-child households in using unlicensed daycare facilities.

Program to Reduce the Burden of Families having Many Children when using Daycare Facilities

In order to provide guardians wishing to have two or more children with the peace of mind to bear and raise children, support will be provided to municipalities with the intention of reducing the fee-paying burden of multi-child households in using daycare facilities, etc.

Program to Support Babysitting Service Users

This program offers assistance in cooperation with municipalities to provide a portion of the service charges, etc. when unlicensed babysitting services are utilized by parents who have children on the waiting lists of daycare facilities, parents who took one year of childcare leave and have returned to the workplace, and parents who temporarily require childcare.

Program to Popularize and Promote Child-centered Childcare (New)

This program aims to popularize and promote child-centered childcare practice in daycare facilities, etc., such as by holding training and seminars for childcarers and dispatching advisers regarding the practices of childcare which actively utilizes the natural environment.

[Securing Daycare Personnel]

Program to Secure Daycare Personnel

With the aim of securing personnel working in daycare services, the program will assign daycare personnel coordinators at Tokyo Metropolitan Daycare Personnel and Daycare Facility Support Centers to offer various consultation services, conduct training to support the employment of certified childcare workers, offer workplace experience at daycare facilities to high school students in Tokyo, and perform the business management training for daycare service providers.

Program to Support Daycare Staff to Obtain Qualifications

Aim to secure daycare personnel by supporting municipalities which offer subsidies for some of the expenses required for the acquisition of qualifications by daycare staff.

Education Loan, etc. Program for Daycare Workers

Through offering the following loan programs, the TMG is attempting to secure daycare personnel.

○Education Loan Program for Daycare Workers

Extend education loans to students who are attending designated childcare training facilities and aiming to acquire childcare qualifications.

○Program to Support for Employment of Daycare Assistant Workers

For service providers who are making efforts to improve the working environment and other issues for daycare workers, extend loans for the expenses of employing daycare assistant workers.

○Program to Support Potential Daycare Workers Raising Preschool Children to Return to Work

Regarding the return of potential daycare workers to daycare facilities, etc., extend loans for a part of the daycare fees in the case where they have enrolled their own children into daycare facilities, etc.

○Program to Support Potential Daycare Workers to be Reemployed

Extend loans for the preparations for employment of potential daycare workers in the case where they previously worked as daycare staff in daycare facilities, etc.

○Partial Loan for Service Charge to Use Program Supporting Daycare Workers Raising Preschool Children

For daycare workers who raise preschool children and cannot find a facility to take care of children due to their work hours, the program makes partial loans for service charge of the babysitter dispatching program, etc.

Support Program to Secure Daycare Personnel

In order to secure daycare personnel, who are needed for expanded services of daycare services, the program subsidizes a part of the cost of initiatives taken by municipalities to secure and retain daycare personnel.

Program to Promote Improvement of Child-rearing Capabilities in the Community

In order to secure and improve the quality of childcare, the TMG supports municipalities which are implementing activities to promote community interchanges, such as exchanges between daycare facilities and exchanges of opinions in daycare facility principals' meetings.

Support Program to Lease Housing for Daycare Staff

In order to secure, retain and prevent the unemployment of daycare personnel, the TMG supports municipalities who subsidize a part of the cost in cases where businesses lease housing for daycare staff.

Training for Career Enhancement of Daycare Workers, etc.

In order to train personnel with leadership capabilities in childcare-related sites, the TMG provides training in specialist fields and management training based on the national guidelines.

Subsidy for Career Enhancement of Daycare Workers, etc.

The TMG supports service providers that encourage career enhancement of daycare workers, etc., and works to secure and retain daycare personnel, so that daycare workers, etc. are

able to improve their skills while being motivated by their jobs.

Program to Support Employment of Daycare Personnel in the Community

Aiming to reduce the burden on daycare workers, the TMG supports municipalities which implement activities such as giving the required know-how relating to employment and providing support for obtaining employment in order to secure daycare assistants in daycare facilities and the personnel who will undertake the work surrounding daycare work.

Program to Enhance Daycare Systems

In licensed-daycare facilities, aim to reduce the burden on daycare workers, maintain the daycare worker numbers, and secure the safety of children by having persons who do not have childcare qualifications activities conduct the work surrounding daycare work and monitoring of outside activities.

Program to Promote Digitalization in Daycare Facilities, etc.

Digitalization such as introduction of the system supporting the creation of documents is promoted at daycare facilities, etc., in order to reduce the burden on daycare personnel, and ensure that daycare workers stay in their jobs for longer and do not leave the profession.

Surveys and Analyses relating to Reducing the Work Burden of Daycare Service Providers

The TMG provides support for the efforts of municipalities by implementing surveys relating to improving the work efficiency through concentrating work among several service providers and lessening work burdens, by examining case studies from local governments which are taking effective daycare measures, and by developing these survey results.

[Other]

Supervision for Unlicensed-daycare Facilities

The TMG provides all unlicensed-daycare facilities with preliminary supervision and training, and conducts on-site inspections. The results of on-site inspections and procedures for selecting facilities are disclosed on the website.

○Inspections of and Guidance to Unlicensed-daycare Facilities Structure Improvement Project

In order to improve accident prevention and safety measures at unlicensed-daycare facilities, the TMG implements inspections of such facilities and gives guidance to them.

Operation of Website Providing Information about Facilities related to Children and Child-rearing

The TMG is operating a website where people including expectant mothers and families with preschool children can use their PCs or smartphones to search for daycare facilities and kindergartens on maps centered around their houses or nearest stations, and can view the detailed information.

Support for Child-rearing, Creating a Friendly Environment for Child-rearing, and Promotion of Healthy Development

In order to provide all children and households in need with proper services in their community, the TMG strives to improve both quality and volume of services, especially focusing on strengthening counseling services.

[Child-rearing Support] Program to Support Users

In order to facilitate the use of educational/daycare/health facilities and child-rearing support programs in the community by children, guardians, expectant mothers, etc., the program supports municipalities that provide information at familiar places and provides consultation and advice as necessary.

Training Program for Child-rearing Supporters

The program offers training to be certified as "child-rearing supporters" to those who are interested in work related to child-care in the community and child-rearing support, and wish to be engaged in related programs.

Discovering Human Resources to Support Child-rearing! Tokyo Chiru-miru Project

The TMG applies the general name of "Tokyo Chiru-miru" to all the people who support child-rearing and monitor children in Tokyo. By making this name widely known among metropolitan area residents, the TMG aims to stimulate opportunities to support child-rearing, as well as promoting the securing of human resources who will undertake child-rearing support activities.

Improvement of At-home Services

Each municipality is offering various services at their child and family support centers as follows.

○Short-stay (Short-term Livelihood Support Program)

In case child-rearing is temporarily difficult due to reasons such as giving birth, ceremonial occasions, or strong anxiety about child-rearing, a child welfare facility or other facilities looks after the child for a short period.

The program supports municipalities that secure capacity for short-stay services, improve support for utilization of cooperating families, and enhance the system according to users' needs.

○Twilight-stay (Program for Nighttime Child-care)

In case a guardian comes home late on a regular basis due to work or is not at home on weekends, a child welfare facility looks after the child on weeknights or on weekends.

○Program to Visit All Households with Newborns

This program visits all families with newborns up to 4 months old, provides consultations and information on child-rearing and referral to other available services if necessary.

○Parenting Support Home Visit Service

Based on information collected by visiting all households with newborns, childcare consultation or simple housekeeping assistance (dispatch of child-rearing support helper) is offered to families that require parenting support.

○Program to Promote Eateries for Children

The TMG supports community-based activities through eateries for children by securing a stable operating environment. In addition to organizing eateries for children, the TMG gains an understanding of household living conditions through conducting meal delivery and home meals, and supports the children's eatery activities as a way to provide the required support.

Program to Assist Child-rearing Support Activities (Family Support Center Program)

These are mutual support activities in the community in which persons who support child-rearing and persons who require child-rearing support become members, and a variety of child-rearing support is provided to match the needs of individuals, such as temporarily looking after, picking up or dropping off a child.

◇At 53 wards/cities/towns (As of the end of November 2020)

Program to Create the “Children’s Place”

The TMG creates an approachable “place” in the community where children can always drop by, and it provides comprehensive support to children and their parents including study support, provision of meals to children, and consultation support to their parents.

Program to Provide Outreach-type Meal Support for Child-rearing Households

By dispatching helpers and volunteers to child-rearing households to prepare meals, and linking this to appropriate support, the TMG supports the healthy growth of children.

Tocho (Tokyo Metropolitan Government) Model Project to Promote Preventive Support (New)

In this project, preventive support teams from municipalities visit households that tend to become isolated from areas and continuously provide support linked to related organizations. By running model programs such as providing advice to teams using advisors and creating preventive support practical manuals, preventive support methods are established to prevent child abuse before it occurs.

Promotion of Housing Supply with Consideration for the Child-rearing Households

The TMG intends to popularize its “Tokyo Certification System for Housing that Supports Child-rearing”, which certifies excellent housing that offers consideration for child-rearing, such as through preventing child-related accidents and making housework easier, and promotes the provision of high-quality housing.



Grants

The Japanese government provides Child Allowance (jido teate: until the end of the fiscal year in which the child turns 15) to families raising children. Single-parent households receive Child-rearing Allowance (jido fuyo teate) (from Japan) and Child Support Allowance (Jido Ikusei Teate) from Tokyo. Households raising children with a mental or physical disability receive the Special Child Rearing Allowance (Japan), Disabled Child Welfare Allowance (Japan), Allowance for Severely Physical or Mentally Disabled (Tokyo) and Child-rearing Allowance for Mentally and Physically Disabled Children (shogai teate) (Tokyo).

Subsidization of Medical Expenses and Others

The TMG subsidizes all or part of the self-pay burden of medical expenses of infants, elementary and junior high school students, and children suffering from specific diseases.

Subsidization of Fertility Treatment Costs, etc.

In order to ensure that testing is implemented at an early stage, and appropriate treatment is begun where necessary, a part of the costs of infertility testing and general infertility treatment are subsidized.

Furthermore, in order to reduce the financial burden of fertility treatment, this subsidy covers a part of specific high-cost medical treatments for married couples (in-vitro fertilization and microinsemination) and the cost of surgical sperm retrieval from the testis, conducted as part of the procedure leading to specific infertility treatments, in cases where medical insurance does not cover paid costs.

Subsidization of Infertility Testing Costs

Regarding the condition known as the inability to carry a pregnancy to term, in which a person becomes pregnant but repeatedly suffers miscarriages, stillbirth, or early neonatal mortality, resulting in them being unable to have children, the TMG subsidizes part of the costs for the testing required for identifying the risk factors.

Program to Prepare Systems for Accepting Children when Child-rearing is Difficult (New)

The TMG supports municipalities to prepare systems for accepting children when child-rearing is difficult in order to arrange an environment in which it is possible for parents in child-rearing households to concentrate on medical care with peace of mind, even in situations such as when a parent has become infected with the novel coronavirus and has to be hospitalized.

[Creating a Friendly Environment for Child-rearing] Tokyo Program for Assisting Children and Child-rearing

The TMG takes the following measures to stimulate opportunities to support children and child-rearing households by linking and cooperating with organizations, groups and municipalities from various fields that support child-rearing, and promoting activities to support child-rearing throughout society.



Mascot character

- Promotion of collaborations that make the most of Tokyo’s potential
- Operation of the parenting support portal site “Tokyo Child-rearing Switch”
- Child-rearing Support Tokyo Passport Program
- Other activities implemented to enhance opportunities to support child-rearing throughout society

Cheer-up Program for Tokyo with Shining Children

In order for the society as a whole to support child-rearing, the TMG will support the initiatives by NPOs, corporations and other organizations, which take actions according to each life stage of people from marriage, pregnancy, childbirth, child-rearing, school, to employment

Improvement of Environment for Outings of Households Raising Children (“Akachan Furatto (Drop in anytime with the baby)” Project)

“Akachan Furatto” is the nickname for facilities used by many people that have space for breast-feeding and changing diapers so that parents with babies can feel at ease about going out with young children.



Akachan Furatto certificate

Municipalities and businesses which have installed “Akachan Furatto” facilities display certificates of conformance issued by the TMG in locations that can be easily seen by users.

Currently, many metropolitan institutions, public establishments including children’s halls, and private establishments such as department stores and shopping centers have installed these facilities.

[Healthy Development]

Gakudo Clubs (After-school Child Day Care)

Suitable places for playing and conducting activities, such as spare classrooms and children's halls, are provided for elementary school children after school hours to support their healthy development.

Urban-type Gakudo Clubs

The TMG supports the operation of Gakudo Clubs enhancing their services with extended hours after 7 p.m. and allocation of full-time certified childcare workers after school hours.

In addition, the TMG implements a project which promotes a program for seamlessly implementing urban-type Gakudo Clubs and children's classrooms after school hours.

Jidokan (Children's Halls)

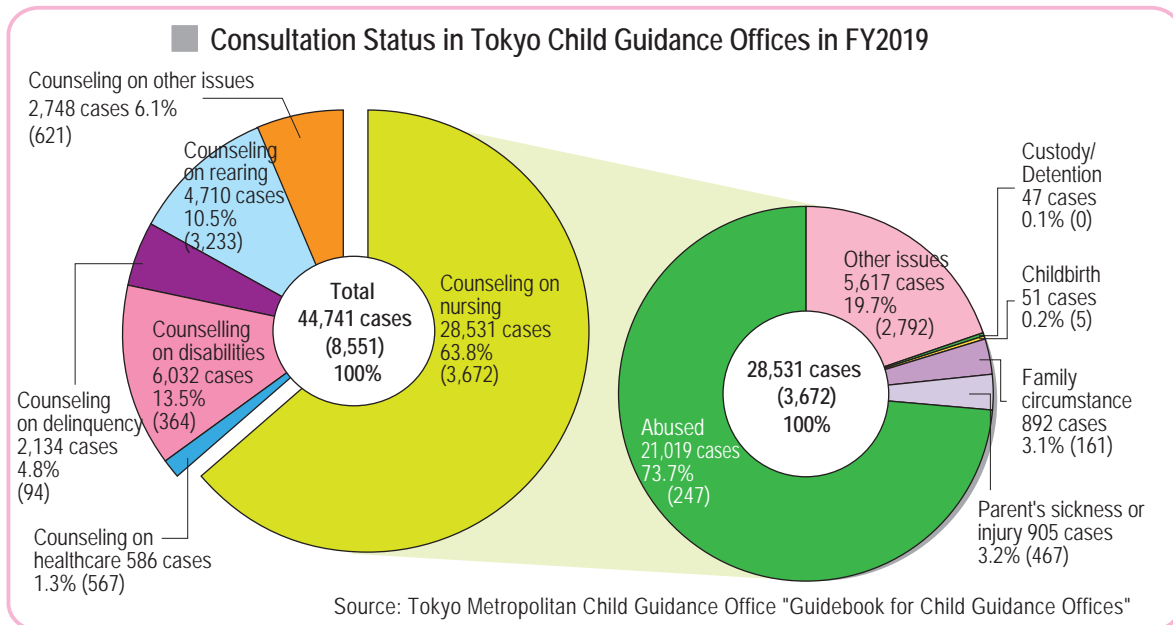
The halls are open to children in the community and also provide guidance and activities for healthy development. In addition, making best use of the senior generation's special abilities and knowledge, the TMG is also promoting initiatives in a comprehensive program for junior and senior high school students.

Urgent Measure Program to Provide Places for Children After School Hours

As an urgent measure until there are no more children on the waiting lists, the TMG will provide safe and secure places for children who are unable to utilize Gakudo Clubs even though they have submitted usage applications by making best use of existing social resources including children's halls and community centers.

Consultation regarding Child/Family Affairs

The TMG establishes the Child Guidance Center and Child Guidance Offices, and provides various support for municipal Child/Family Support Centers and Program on Community Bases for Child-rearing Support (Child-rearing Plazas).



Child Guidance Center and Child Guidance Offices

Child Guidance Offices provide consultation regarding diverse issues of children under 18 years old. Temporally protection is available if required. They also offer "Mental Friend" service for children who tend to be withdrawn.

Child/Family Support Centers

At the Child/Family Support Centers, children or their family in the community can consult about any issues at home and receive comprehensive support.

Program on Child-rearing Plaza (Program on Community Bases for Child-rearing Support)

Local governments operate the Child-rearing Plazas to offer places for interaction between parents in the community. They also offer consultations and lectures regarding child-rearing.

Technical Assistance for Child Advocacy

Toll free telephone consultation for children. Professional staff research cases where children's rights may have been violated and mediate between parties concerned.

Enhancement of Children's Consultation System

The number of consultations received regarding child abuse was 21,019 in FY2019, up from 714 in FY1998, and the contents of the consultations have become more serious than ever. In order to prevent child abuse before it occurs, the TMG aims to enhance its Child Guidance Office system and cooperate with related institutions.



System of Child Guidance Offices and Function Improvements

○Strengthen the Personnel Training Function of Child Guidance Offices

Strengthen the personnel training function of Child Guidance Offices to improve case work skills at child guidance offices, while also strengthening the ability of Child/Family Support Centers and public health centers to respond to abuse issues.

○Establish Child-abuse Prevention Teams

The child abuse prevention teams are established at Child Guidance Offices to enforce initial response of child abuse cases.

○Promote Early Return to Families

Assistants to promote early return to families are assigned at Child Guidance Offices, who make efforts toward improving the family environment and other measures so that children placed in facilities due to reasons such as child abuse can reunite with their families.

○All-year-round Opening of Child Guidance Center

In order to promptly respond to the consultation on child abuse, the Child Guidance Center has established an emergency center to handle urgent cases all year round 24 hours a day

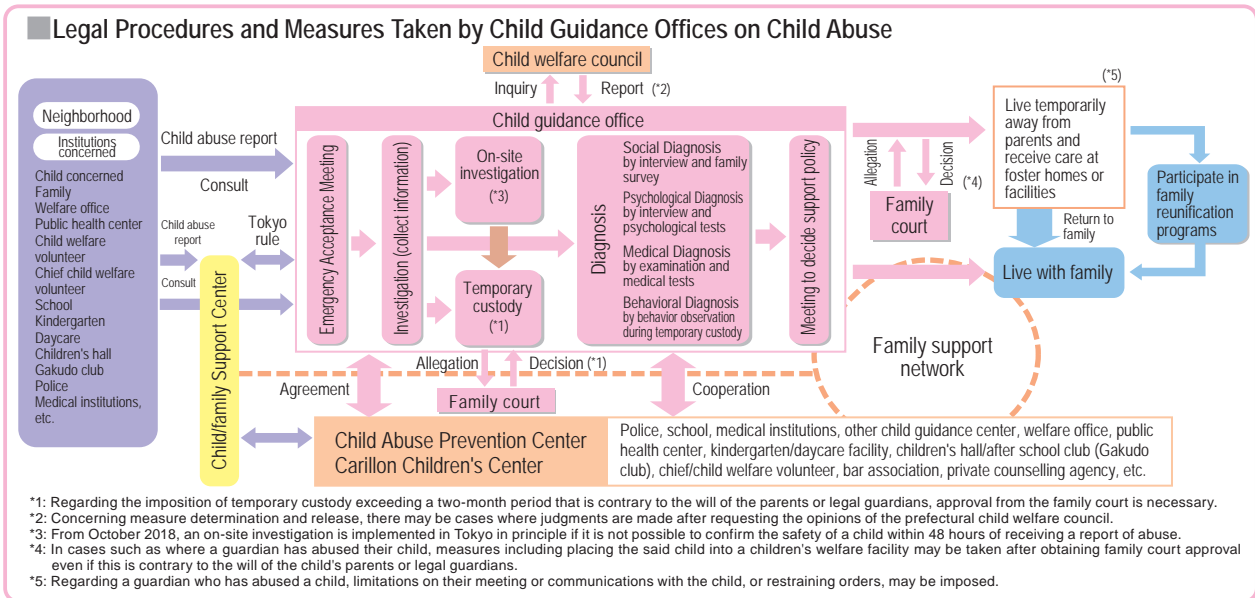
(including Saturdays, Sundays, national holidays and New Year holidays).

○Assign Lawyers

Part-time lawyers are assigned at Child Guidance Offices and cooperative lawyers are registered to provide staffs with advice and guidance from a legal perspective.

○Cooperative Hospital (Doctor) System

Doctors with expert knowledge and experience on legal medicine, etc. are designated as cooperative doctors in order to appropriately deal with abuse cases by obtaining medicolegal opinion and diagnosis for wounds suspected of being caused by physical abuse.



Tokyo Metropolitan Government Ordinance regarding the Prevention of Child Abuse

To deepen understanding throughout society regarding the prevention of child abuse and promote the implementation of activities relating to this prevention in an aim to resolutely protect children from abuse, an ordinance was enacted stipulating the obligations, etc. of the TMG, Tokyo residents, guardians, etc.

Date of enforcement: April 1, 2019

<p>[General provisions]</p> <ul style="list-style-type: none"> ○ Purpose, definition of terms, basic principles ○ Obligations of the TMG, Tokyo residents, guardians, and related organizations, etc. (Including promotion of child-rearing without use of corporal punishment, etc., prohibition of corporal punishment by guardians, and obligations for guardians to make efforts to comply with recommendations of medical checkups) 	<p>[Prevention of abuse before it occurs]</p> <ul style="list-style-type: none"> ○ Development of an environment in which it is easy to receive consultation regarding pregnancy, childbirth and child-rearing ○ Increase public awareness to help prevent unplanned pregnancies, etc. 	<p>[Early detection of abuse and early response]</p> <ul style="list-style-type: none"> ○ Abuse notifications provide the opportunity to protect the child and offer support to the household ○ Child safety confirmation measures ○ Investigations by Child Guidance Offices, etc. ○ Cooperation, information sharing, etc.
<p>[Support, etc. for children who have been victims of abuse and their guardians]</p> <ul style="list-style-type: none"> ○ Support for children who have been victims of abuse ○ Necessary guidance and support for guardians of children who have been victims of abuse 	<p>[Social childcare, etc.]</p> <ul style="list-style-type: none"> ○ Promotion of entrusting children who have been victims of abuse to foster parents in order that they receive comprehensive social childcare, etc. ○ Necessary support to achieve social independence, etc. 	<p>[Training of personnel, etc.]</p> <ul style="list-style-type: none"> ○ Training of staff who maintain specialized knowledge and skills relating to the prevention of abuse ○ Inspection of child abuse cases resulting in death, etc. ○ Disclosure of policy implementation status relating to the prevention of abuse, etc.

Program to Secure Human Resources for Child Guidance Offices (New)

In order to secure human resources for Child Guidance Offices, in addition to establishing an original employee recruiting website and conducting effective public relations activities using SNS, the TMG improves employee treatment such as by leasing private apartments for employees.

Child Guidance Office Information Standardization and Personnel Development Program

The TMG develops programs which enable highly accurate judgment of abuse risk, and plans to prevent child abuse before it occurs, discover abuse quickly if it does occur, and develop human resources including child welfare officers.

Outside Assessments in Child Guidance Offices

In a plan to improve the quality of the facility management of temporary shelters, assessments are implemented by outside institutions, and outside assessments to the Guidance Division are tested out.

Activities by Third Party Committee Members in Temporary Shelters

Activities such as conducting interviews of children by third party committee members are implemented with the purpose of advocating the rights of children while in custody in temporary shelters and improving the quality of temporary shelter management.

Measures for Early Detection of Households Requiring Support

- Promote early detection of households requiring support by utilizing the opportunities when maternity passbooks are issued or at the time of newborn visits, and also support the efforts of municipalities providing appropriate support, such as through individual support at health centers and services offered by Child/Family Support Centers.
- Support teams have been set up, which visit local schools and childcare support facilities, collecting information about families who have issues or concerns, supporting municipalities that are implementing activities aimed at providing necessary support at an early stage.

Program to Visit All Households with Pre-school Children

The TMG supports municipalities that confirm the safety of children by visiting all households which have preschool children, in a plan to discover and deal with child abuse at an early stage.

Support Concierge Program **(New)**

Regarding households requiring monitoring, etc. that have been identified from visits made to homes with children who have not undergone health examinations for infants or children who are not attending kindergarten, the TMG continuously gains an understanding of their situations by linking with related organizations, and supports to municipalities leading to the provision of appropriate assistance, if necessary.

Support to Strengthen Capabilities of Municipalities to Address Child Abuse Issues

To provide support in strengthening the capabilities of municipalities to address child abuse issues, child abuse prevention coordinators are assigned to Child/Family Support Centers set up by municipalities and ensure appropriate progress management of abuse cases and strengthen cooperation with related organizations. Also assign more child abuse prevention workers based on child population to ensure a system that can properly handle abuse cases.

Program to Enhance the Regional Support Capabilities of Child/Family Support Centers

The TMG aims to further enhance its Child/Family Support Center system by providing support for stationing workers who are highly experienced in child abuse prevention measures, supporting the administrative work required for the detailed implementation of the regional councils of countermeasures for children requiring protection in municipalities, and providing support for securing consultation systems on working days in the evenings and at weekends.

Enhancement of Capabilities at Medical Institutions to Address Child Abuse Issues

To strengthen the capabilities of medical institutions to address child abuse issues, the TMG supports local medical institutions in launching Child Abuse Prevention Service (CAPS) committees with the cooperation of Child Guidance Offices, and offers training on child abuse to healthcare providers.

Initiatives to strengthen cooperation with medical institutions are being taken with an aim to prevent and respond appropriately to child abuse issues, such as liaison councils among hospitals with CAPS.

TMG Regional Council of Countermeasures for Children Requiring Aids

In order to discover children requiring aids at an early stage and protect them appropriately, the TMG operates the TMG Regional Council of Countermeasures for Children Requiring Aids composed of representative council, relevant party's council and professional's council based on the Child Welfare Law to secure smooth links and cooperation between and among related organizations.

LINE Guidance "Child/Parental Love Consultation Desk @Tokyo"

In order to prevent child abuse, the TMG is developing a consultation system that is easier for children and their guardians to access by establishing a consultation desk which utilizes the LINE application.

Operation of Children's Advocate Investigation Committee **(New)**

Looking to the future full-scale implementation of a child advocate system (workers who support children to express their opinions), the TMG analyzes issues of the project and verifies the effects, such as by establishing an investigation committee, securing and educating the workers who support children to express their opinions.

Expansion of Social Care

The number of children in need for social protection, including victims of child abuse, is currently about 4,000, and many of these children live in children's protective care facilities, etc. However, due to the fact that the problems faced by abused children continue to worsen, the TMG considers it necessary to provide improved individual support for each child.

The TMG developed the "Tokyo Metropolitan Social Care Promotion Plan" in March 2020. Based on this plan, the implementation of activities relating to the entrusting of children to foster homes, etc. and special adoptions are promoted, in order to bring up children who require social care in a family-like fostering environment to enable them to become self-reliant. The TMG also aims to change children's protective care facilities, etc. to small-sized, regionally dispersed formats, implement activities to provide a full range of specialist care and develop multiple functions for children with high caring needs in order to assist children who have been brought up in social care to become independent.

Promotion of Fostering in Family-like Environments

The TMG aims to increase the number of registered foster families including foster homes and the number of entrusted children. In addition, the TMG conducts training to improve the childcare ability of foster parents and hold exchange meetings for foster parents.

Foster Home (Foster Parents)

"Foster Homes" accept children and provide care for a certain period without legal adoption.



Special Foster Home

Specialized homes to accept problematic children who have abuse experiences, disabilities, or immoral behaviors to provide special care.

Certain conditions are fulfilled and completion of special foster home training is required to be registered as a special foster home.

Foster Parenting by Relatives

In cases where parents are unable to care for their children, relatives who have responsibility for raising these children will become foster parents and bring up the children.

Foster Parent

Foster parents accept and raise children for the purpose of legal adoption.

Program on the Organization to Support Foster Parents

In order to further promote entrustment of the children requiring social care to foster parents, the TMG establishes a specialized organization to complement the functions of the Child Guidance Offices such as promoting the entrustment of children to foster parents and supporting them, and undertakes activities including the popularization and promotion of the foster parent system, consultation support and training relating to foster parenting, guidance for aiding foster children to become independent, and support following release from fostering institutions.

Fostering Institutions (Institutions offering Comprehensive Fostering Support for Foster Parents) Program

In order to further promote the entrusting of children requiring social care to foster parents, the TMG establishes specialized institutions (fostering institutions) which provide consistent support, from foster parent recruiting and assessment, training related to foster parents before and after becoming registered and after entrustment, matching of children and foster parents, support for foster parents in fostering during entrustment of foster children, and up to provision of support after the release of the foster parent entrustment measures.

Program to Promote Placement of Newborn Babies

This program promotes the placement of newborn babies with foster parents at an early as stage as possible, in cases where it is determined that adoption would be the best way forward in cases of newborns who are unable to receive appropriate care within their birth homes, by providing training that improves the caring skills of foster parents who plan to adopt their wards.

Program to Support Foster Homes in Self-reliance of Children

In order to enhance the support for self-reliance of a foster child who reaches a certain age and leaves the foster homes, the TMG provides financial assistance to the foster homes when they provide support for self-reliance of ex-foster children by giving them advice about life, etc.

Program to Subsidize the Expense of Foster Homes for Interaction

In order to reduce the burden of foster homes, etc. during the interaction with prospective foster children, the TMG subsidizes the expense derived from the interactions such as transportation fees.

Small-sized Residential Foster Project (Family Home)

Five to six children living together at home, where certain conditions are fulfilled.

A staff force will be enhanced to promote the establishment of

family homes, which are operated by corporations that establish institutions for children.

Program to Offer Professional Consultation on Foster Parent Child-rearing (Foster Parent-Child Support Network) (New)

By establishing a consultation center where professional counselors offer coordination from a third-party standpoint regarding issues and questions that could not be resolved during team upbringing, the TMG maintains children's interests as well as advocating for their rights.

Approval and Operations Guidance of Private Adoption Mediation Providers

In order to protect children with regard to adoption mediation by private institutions, and promote appropriate adoption mediation, the TMG implements approval investigations and provides guidance, etc. for maintaining appropriate operations to providers conducting adoption mediation.

[Childcare Facility]

Children's Protective Care Facility

These facilities provide protective care for children without guardians and children who have been abused, supporting their life and education.

Establishment of Children's Protective Care Facilities with Strengthened Technical Functions

In response to serious problems concerning child abuse and other issues, the TMG develops children's protective care facilities with strengthened technical functions such as "specialized care" by assigning psychiatrists and staff to supervise treatment, in order to expand the support for children who move into facilities. Further, additional staff will be provided to enhance "individual support" for facilities operating the unit-care system.

Introduction of Small-sized Units in Children's Protective Care Facilities (Maintenance)

The TMG encourages small-sized units within facilities, and promotes smaller child-caring units to provide home-like environment with closer attention to each children.

Childcare Group Home

Up to six children from a children's protective care facility are placed in a house away from the facility to be raised in home-like environment.

Program to Promote the Establishment of Group Homes and Family Homes

The TMG promotes the development of home-like environment by strengthening the system to support the staff members of group homes or family homes when social welfare organizations establish group homes or family homes.

Friend Home System

Children who usually live in children's protective care facilities, etc. visit "friend homes" during long holidays, such as summer vacation, to experience home-like care.

Model Program on Cooperative Specialized Care Function

A trial of the "cooperative specialized care function" to comprehensively provide livelihood assistance, medical care and education will be conducted at Tokyo metropolitan children's protective care facility (Shakujii Gakuen) to enhance support for children, etc. with serious symptoms due to abuse.

Program to Enhance Relationships Between Facilities and the Community

In children's protective care facilities, etc., this program plans to utilize senior generation residents and those who are about to become senior citizens as human resources for undertaking various activities including housework and child-rearing, providing a full range of support to children admitted to the facilities, promoting activities conducted by the elderly, and enhancing the relationships between facilities and the community.

Home for Infants

Accept babies and toddlers and provide care such as feeding, bathing, health checkups and observe their mental development.

Program to Promote the Rearing of Infants in Their Own Homes

This program aims to achieve the return of children who have experienced problems caused by abuse, etc. to their own homes, by improving specialist care for both mental and physical damage, and offering advice to parents and guardians on child-rearing.

Furthermore, in cases where a return to life at home is considered difficult, the TMG promotes entrustment of the children to foster parents by improving supports, etc. for interaction between the children and foster parents.

Home for Juvenile Training and Education

Accept children who indulge or would indulge in delinquent behavior or require supervision due to adverse home environment. Provide them with appropriate care so that physical and mental health are improved through lifestyle guidance, education guidance or career guidance.

Independence Support Home

Provide detailed consultation and guidance to children who have finished compulsory education and have left foster care facilities about employment and daily living so that they can live in a group or independently.

Job Training Program (Independence Support Home)

Develop a system to provide support for employment and staying employed to children who are admitted in or have left Independence Support Homes, to strengthen support for their independence.

Program to Strengthen Independence Support

Assign independence support coordinators at children's protective care facilities who can provide comprehensive independence support, from preparing to become independent while the child is in the facility to care after they leave.

Furatto (Drop in Anytime) Home Project

If children who have left facilities have a setback at work, etc. or have concerns about life, this project provides and supports places offering open consultation about work and other matters and places where children with the same concerns can gather.

Employment Support Program for Children Who Have Left Children's Protective Care Facilities

Independence support is provided to children who have left children's protective care facilities, such as consulting, support in finding work and follow-up after employment.

Program of Infection Prevention Measures, etc. in Children's Protective Care Facilities, etc. (New)

In order to continually provide the necessary services while

taking measures to prevent the novel coronavirus disease, the TMG aids with the costs required for responding to the increased workload due to comprehensively implementing actions consisting of environment preparations and infectious disease countermeasures for children's protective care facilities.

Promotion of Independence Support of Adolescent Youth

The TMG engages in independence support of youths in close cooperation with government organizations, police departments, schools and communities.

Support for Youth Entering School/Finding Career

The TMG offers support programs for unemployed youths in finding jobs through the Tokyo Metropolitan Employment Service Center, run by the Metropolitan government, and supports youths who are unsure of their career paths. In addition, the TMG promotes work experience days for junior high school students and internships for high school students so that they can become more independent in society and at work.

Improvement of Maternal and Child Health

Maternal and child health services such as maternity checkups or health examinations for infants and toddlers are provided by municipal governments. The TMG, in addition to the above services, offers various technical supports including consultation on medical care and child-rearing for physically disabled children and children requiring long-term care. It also works in cooperation with welfare, health care and medical care-related organizations to promote early-detection of families who are in need for support.

Tokyo Mom and Dad Support Program

To provide seamless support for pregnancy, childbirth and child-rearing, the TMG plans to increase public awareness of the establishment of centers providing comprehensive support for the parenting generation, as well as supporting the activities implemented by municipalities in interviewing all expectant mothers, distributing packages of child-rearing items, and providing housework and child-rearing support.

Tokyo Metropolitan Childbirth Support Program – Don't Be Beaten by COVID-19! – (New)

To support and back up households who bear and bring up children in the novel coronavirus pandemic, the TMG aims to lessen the economic burdens through the utilization of child-rearing support services and provision of nursery items. The additional gaining of understanding of specific child-rearing needs allows these requirements to be incorporated into future measures.

Program of Comprehensive Measures for Expectant and Nursing Mothers in the Novel Coronavirus Pandemic (New)

○ Coronavirus Testing Charge Subsidy

The charges related to novel coronavirus testing for expectant mothers who wish to be tested before giving birth (around the 36th week of pregnancy) are subsidized by a maximum of 20,000 yen for one test. Expectant mothers wishing to be tested should contact their regular obstetrics care medical institution.

○ Dedicated Support

For expectant and nursing mothers who have become infected with the novel coronavirus, midwives and public health nurses

offer advice relating to specialist care and parenting by responding to the mothers' various worries and concerns through telephone calls and home visits.

Healthy Child-rearing Tokyo Program

Responding to the needs of expectant and nursing mothers and child-rearing households, the TMG provides contents which describe child-rearing skills to alleviate any anxieties or sense of burden that mothers may have.

Prenatal Checkups/Parturient Checkups/Health Examination for Infants and Toddlers

Prenatal checkups, health examinations for infants and toddlers at various stages of growth, health care guidance for guardians, and development examinations by child neurologists are provided by each municipal government.

Screening for Inborn Error of Metabolism and Others

In order to facilitate early detection and early treatment and to prevent physical or mental disabilities, the TMG conducts blood test for 5 to 7 days old infants at cooperative medical institutions.

Consultation on Medical Care and Child-rearing for Children with Disabilities

Private consultations by interviewing and visiting and the support in collaboration with related organizations are offered by public health centers for families and children who suffer physical disabilities or undergoing long-term treatment with chronic disease.

Telephone Counseling "Health Consultation for Children" (Emergency Pediatric Medical Consultation)

Nurses and public health nurses will consult with you regarding the health of children or emergency pediatric issues. Consultation with a doctor is available as needed. (It does not offer diagnosis by physicians.)

Maternal and Child Health Guidance Project

○Telephone Consultation on SIDS (Sudden Infant Death Syndrome)

Telephone consultation by a specialist or a befriender is provided to the bereaved family who lost their baby for psychological support.

○Tokyo Child-rearing Information Service

The TMG offers information relating to infant accident prevention, childcare anxieties, and measures for responding to sudden illnesses, etc. via Internet.

Women's Life-long Health Support Project

○Tokyo Health Hotline for Women

Consultation is provided by phone or e-mail by nurses for women from the age of adolescence to menopause on issues such as sexual concerns of adolescence, birth control, gynecological diseases, and menopause disorders.

○Tokyo Sterility/Infertility Hotline

Experienced peer counselors provide consultation on issues related to sterility or infertility.

○Tokyo Pregnancy Consultation Hotline

Specialists such as nurses provide consultation by telephone or e-mail on issues related to pregnancy or childbirth. Relevant organizations are introduced depending on the details.

In addition, for persons contacting the "Tokyo Pregnancy Consultation Hotline" who feel uneasy about undergoing a medical examination at a medical institution by themselves or seeking consultation alone in the municipality where they live, the TMG conducts activities such as accompanying them when

visiting an obstetrics care medical institution and providing assistance with the initial obstetrical medical examination fees.

Stronghold Hospital Project for Children's Mental Care

To support the parties in each community involved in children's mental care, the TMG supervises the parties in each community, conducts training programs based on know-how from medical care sites, and builds awareness among metropolitan area residents by providing wide-ranging information, having Tokyo Metropolitan Children's Medical Center as a base.

Support for Children with Specific Child Chronic Diseases

To reduce the burden of medical expenses, the TMG subsidizes a part of the self-pay burden of the expenses. Further, in line with the implementation of the project to support self-reliance, the TMG promotes sound development and self-reliance of children requiring long-term care. Additionally, in order to resolve issues relating to the provision of appropriate medical care to children, etc. from childhood to adulthood, a transitional period medical care support center has been established, and support systems are being prepared.

Prevention of Accidents Involving Children

○Accident Prevention during Infancy

The TMG conducts activities to improve awareness among metropolitan area residents relating to accident prevention during infancy, such as by publishing information on websites.

Program to Popularize Liquid Baby Formula, and Increase Public Awareness

Regarding liquid baby formula, the TMG promotes its utilization as a relief supply item in times of disaster through activities such as increasing public awareness at disaster preparation events, etc. to promote understanding among metropolitan area residents.

Support for Single-parent Families

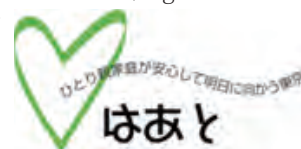
As of January 1, 2020, there were about 113,900 mother-and-child households in the metropolitan area (about 1.56% of total households), and about 23,400 father-and-child households (about 0.32% of total households).

The TMG formulated the "TMG Support Scheme for Independence of Single-parent Families (Fourth Term)" in March 2020 to improve employment support and consultation systems, develop child-rearing support facilities, and provide financial support.

The single-mother and single-father independence supporter assigned at welfare offices and government branch offices are the contact persons for consultation and support.

Single-parent Family Support Center "HAAT" (Employment and Independence Support Centers for Mother-and-child Households)

Provides comprehensive employment support service including employment consultation for single-parent families, provision of employment information, and employment support training for single-parent families, in addition to consultations on daily life, child support expenses, assistance on visitation, legal consultations on issues before and after divorce, parental support courses before and after divorce, and single-parent group consultation meetings. As the centers are located in Iidabashi (HAAT, HAAT



Iidabashi) and Tachikawa (HAAT Tama), please utilize the center that is most convenient.

○ **Single-parent Family Employment Support**

Counselors offer employment support (free job placement, collect/provide information, employment consultation, career advancement support, awareness to promote employment, etc.) for single-parent families and related parties to promote self-reliance living.

○ **Consultations on Single-parent Family Life**

Consultations are provided regarding the various problems in the lives of single-parent families.

○ **Consultations on Child Support/Support for Visitation**

This office offers consultations on divorce issues including child support. In principle, an appointment is needed for specialized interviews.

In cases where children and their parents are living separately due to divorce, we also offer consultations and assistance on visitation and other issues.

○ **Legal Consultations on Issues before and after Divorce**

Lawyers who are familiar with family affair cases provide consultations to a parent before/after divorce (including an unmarried parent, etc.) on various legal issues derived from divorce. In principle, an appointment is needed for the consultation and it is limited to one hour (continuous consultation is up to 3 times).

○ **Parental Support Courses before and after Divorce**

For single parents and parents before divorce, seminars are held relating to the effects of divorce on the children involved, the costs of child-rearing, and visitation rights.

○ **Single-parent Group Consultation Meetings**

“Group Consultation Meetings” are held for single parents and persons before becoming single parents which enable them to meet and exchange information with others in similar situations. They are able to hear advice from specialists and discuss their worries and concerns.

○ **Employment Support Seminars**

Free seminars on topics such as using the computer are held for mothers/fathers of single-parent families and widows to acquire knowledge and skills required for employment.

○ **Training for Support Consultants**

Training is conducted on knowledge and skills related to independence support required in consultation and support activities.

Project to Improve the Lifestyles of Single-parent Families

The TMG provides supports at various levels for single-parent families, etc., living in local communities, with the aim of solving the issues they face and ensuring mental health for children of such families.

○ **Project to Support Lifestyle and Academic Studies of Children**

Lifestyle support to encourage the learning of good lifestyle habits, and study support are provided subsequent to Gakudo Clubs for children of single-parent families. Meals are also provided as part of these activities.

○ **Project to Support Lifestyles of Single-parent Families**

The TMG provides consultation regarding concerns about life, household budgeting and child-rearing classes taught by specialists, and academic support to encourage children to acquire the high school graduation certificate.

Subsidies to Support Independence among Single-parent (Single Mother/Single Father) Families

The TMG provides the following services for the mothers and fathers of single-parent families, in order to make it easier for them to find work.

○ **Subsidy for Education towards Independence**

Partial subsidy for the costs of education and training.

○ **Subsidy Promoting Professional Training**

This “subsidy promoting professional training” will be paid to those attending classes at a training institute with the aim of becoming professionally qualified, in order to reduce any burden on the family’s lifestyle.

A further “subsidy supporting the completion of professional training” will also be paid when the training institute course is completed.

Loan Program to Promote Professional Training by Parents in Single-parent Families

Parents from single-parent families aiming to acquire qualifications that are advantageous for finding employment who register with training institutes using the “subsidy promoting professional training” can access loans to pay for their registration/entry costs and the costs associated with preparing for employment.

Project Supporting the Independent Living of Single-parent Families

Workers supporting the independent living of single-parent families help those receiving child-rearing benefits (other than those on unemployment benefit) to achieve independence and employment, by developing a support plan based on their individual needs and circumstances. They work in partnership with “Hello Work” (local public employment bureaus).

Home Help Service for Single-parent Families

Home helpers are dispatched to households whose housework and child-rearing in daily life have been disrupted because they recently became a single-parent family, they are participating in employment training or a parent is temporarily ill, and helpers cook meals and support child-rearing.

Support Program for Single-parent Families on Acquisition of a Certificate for Students Achieving the Proficiency Level of Upper Secondary School Graduates

The program subsidizes a part of course fees for parents or children of single-parent families who seek to acquire certification as students achieving the proficiency level of upper secondary school graduates in order to expand their possibilities in job hunting or job change under a better condition.

Program to Enhance the Services at the Consultation Desk for Single-parent Families

Employment support staff will provide consultation services and support to single-parent families to improve their professional ability and job hunting; this program will be a comprehensive support system by collaborating with the single-mother and single-father independence supporters.

Program to Promote Work from Home for Single-parent Families

Coordinators for work-from-home careers provide consultation services and support to single-parents who wish to work from home by utilizing matching sites, etc.

Program to Support the Securing of Child-rearing Expenses

To realize the stable acquisition of child-rearing expenses by single-parent families, the TMG supports municipalities which provide guarantees for child-rearing cost advances and assistance relating to the creation of notarized documents.

Establishment of the Portal Site for Single-parent Families “Single Mother/Single Father Life Support Navigation Tokyo”

On this website, useful information is disseminated free of charge to single parents and persons who think they may become single parents. (The information can be viewed on smartphones and personal computers.)

In addition to introducing support systems for single-parent families, etc., FAQs and articles relating to concerns for single parents, and seminar and event information are described on this site that will be useful for single parents.

Subsidization of Medical Expenses for Single-parent Families

The TMG subsidizes a part of the self-paid burden of medical expenses for single-parent families.

Welfare Loan for Single-mother and Single-father Households

In order to secure welfare of children in single-mother and single-father households and to support financial independence of these households, loans for twelve different purposes, such as starting a new business, completing school education, living expenses or relocation, are available with or without interest.

Support Facilities for Single-mother Households

These facilities admit both single-mothers and their children, so that they can ultimately establish an independent life.

Some facilities may also be used as temporary shelters for mothers and children in urgent need.

Metropolitan Housing

In the lottery method for recruiting residents of metropolitan housing for families, there is a system in which the winning probability is seven times higher than that of ordinary households. Also, there is the point method from which people who have more trouble with housing than others are registered as move-in candidates as many as the number of residents recruited.

Note that for applications on and after November 2019, it has also become possible to apply for fixed period use housing for young married couples and parenting generation residents (Residence period: 10 years or until the children reach their high school completion period), and for “monthly move-in recruitment” (announcing recruitment requirements on the website around the middle of every month).

Additionally, it is possible to submit move-in applications for part of the housing in the Tama area at any time from February 2020.

Welfare Programs for Women

The Women's Counseling Center, Tokyo Women's Plaza (Bureau of Citizens and Cultural Affairs), welfare offices, etc. offer consultations for various problems that women encounter, such as violence by husbands. The Women's Counseling Center and Tokyo Women's Plaza take on the function of the Spousal Violence Counseling and Support Centers under Act on the Prevention of Spousal Violence and the Protection of Victims (the Prevention of Domestic Violence Law), and play a central role in supporting victims of spousal violence.

The Women's Counseling Center is positioned as one of the facilities to support stalking victims under Act on the Regulation of Stalking Activities, etc. (the Stalker Regulation Law).

The TMG also provides the operation of the Women's Counseling Center, assigning female counselors, running women's shelters and loaning funds to support independence.

Tokyo Women's Counseling Center

The TMG has set up the center to provide counseling to women who need emergency protection and support for independence, and to offer advice, guidance and temporary protection. Temporary protection is in principle based on requests by the welfare office, etc.

Spousal Violence Counseling and Support Centers

This center provides victims of spousal violence with consultation, information provision, and temporary protection. In Tokyo, the Women's Counseling Center and Tokyo Women's Plaza (Bureau of Citizens and Cultural Affairs) are assigned separate roles and cooperate in providing support.

Female Counselors

Assigned to the Women's Counseling Center and welfare offices in wards and cities to consult with women requiring supports about various issues.

Accommodation Shelters for Women

This shelter protects women in need of support for independence as well as provide employment guidance and support on daily matters. Five facilities with a total capacity of 230 people are located in Tokyo.

Women's Welfare Loans

In order to promote financial independence and welfare of women who have no husbands, loans for eleven different purposes, such as completing school education, living expense, relocation or starting new business, are available with or without interest (Income limitation may be applied).

Program for Supporting Young Female Victims, etc.

For young women who have faced hardships, such as victims of violence, cooperation is made with private sector organizations that provide consultation support using outreach, offer secure locations, etc., and links are made to public institutions, if necessary.